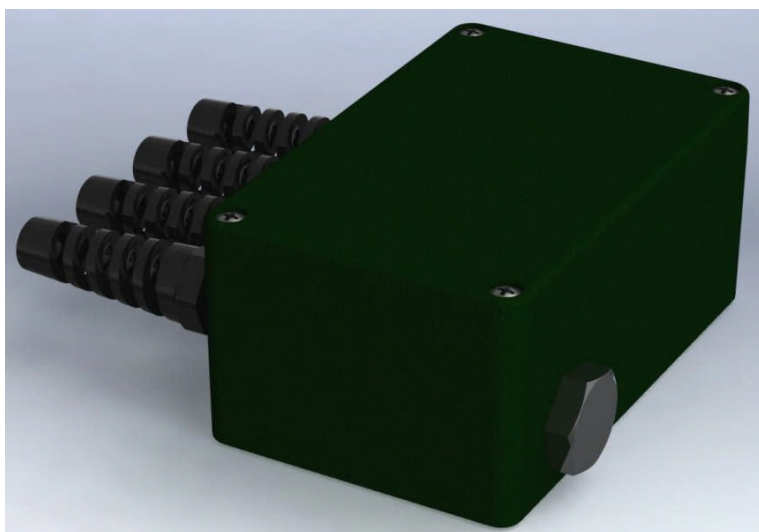


ISOMAG 
The friendly magmeter

ISOCHECK

Data Sheet



CE

ISOIL 
INDUSTRIA
The solutions that count

ABOUT ISOCHK

ISOCHK is an instrument designed to test the ML110 and ML210 converters. The tests are performed by a user friendly interface: ISOCHK INTERFACE. The tests are carried out on:

- Flow rate measurement on 8 predetermined points (0/10/20/30/40/50/75/100)
- 4-20mA output on 8 predetermined points (0/10/20/30/40/50/75/100)
- ON/OFF outputs in individual and simultaneous mode with load

TECHNICAL CHARACTERISTICS

USB II TYPE B power consumption 5V 100mA

- Suitable for ISOMAG converters: **ML110** (all versions), **ML210** (all versions)

ACCURACY:

- Flow rate: $\pm 0,5\%$
- Output 4-20mA: $\pm 1\%$

ISOCHK INTERFACE:

- Require O.S. Windows XP® (S.P. 3), Windows Vista®, Windows7®

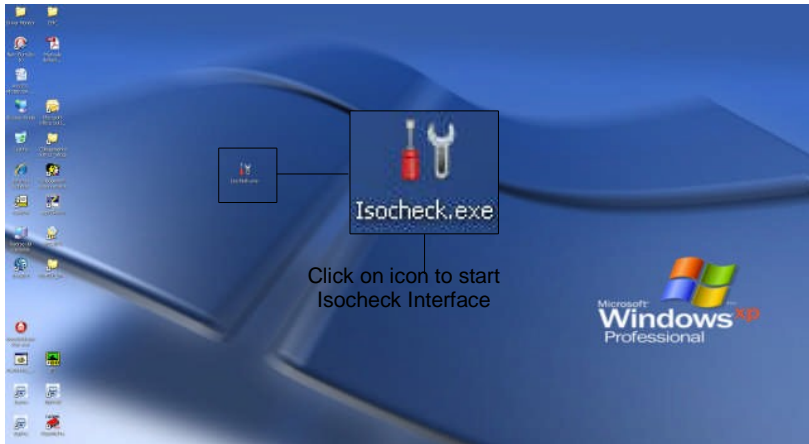
HOW TO ORDER

ISOCHK	Flow Rate Simulator
A	<i>Housing material</i> Aluminum housing
1	<i>version</i> Field version
A	<i>Suitable for converter</i> ML110 / ML210

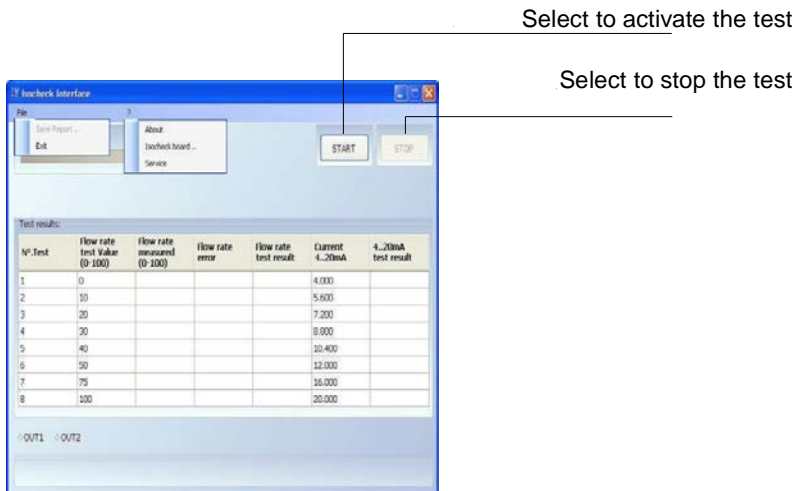
Ordering Code: **ISOCHK-A1A**

ISOCHECK INTERFACE

ISOCHECK INTERFACE is an executable software needed to operate with Isocheck.

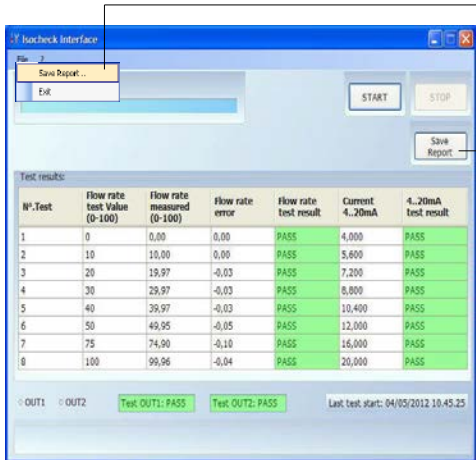


- Through an easy and intuitive graphical interface, allows:
 - The start of the automatic testing process
 - Create a PDF report of test results.



TEST REPORT

Once the tests are performed, a PDF report can be generate as show below:

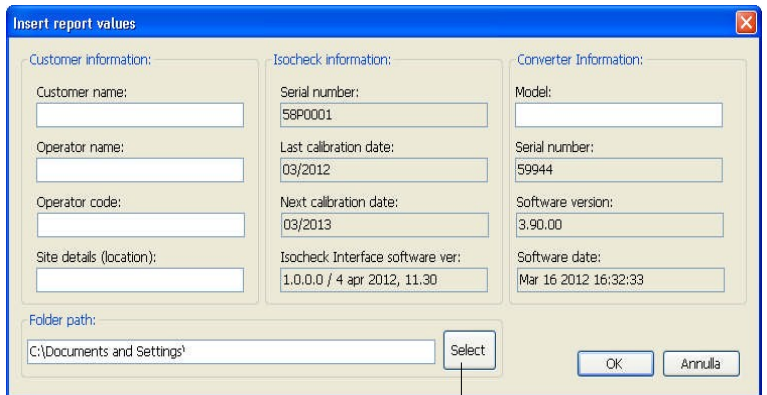


The screenshot shows the 'Isocheck Interface' window. At the top, there is a menu bar with 'File' and a 'Save Report...' option. Below the menu, there are 'START' and 'STOP' buttons. A 'Save Report' button is located at the bottom right of the interface. The main area displays 'Test results' in a table format. Below the table, there are status indicators for 'OUT1' and 'OUT2' (both showing 'PASS') and a 'Last test start' timestamp.

N° Test	Flow rate test Value (0-100)	Flow rate measured (0-100)	Flow rate error	Flow rate test result	Current 4...20mA	4...20mA test result
1	0	0,00	0,00	PASS	4,000	PASS
2	10	10,00	0,00	PASS	5,600	PASS
3	20	19,97	-0,03	PASS	7,200	PASS
4	30	29,97	-0,03	PASS	8,800	PASS
5	40	39,97	-0,03	PASS	10,400	PASS
6	50	49,95	-0,05	PASS	12,000	PASS
7	75	74,90	-0,10	PASS	16,000	PASS
8	100	99,96	-0,04	PASS	20,000	PASS

SELECT FOR GENERATING A TEST REPORT

Fill out the form below (the gray boxes are not editable):




The 'Insert report values' dialog box contains the following fields:

- Customer information:** Customer name, Operator name, Operator code, Site details (location).
- Isocheck information:** Serial number (58P0001), Last calibration date (03/2012), Next calibration date (03/2013), Isocheck: Interface software ver (1.0.0.0 / 4 apr 2012, 11.30).
- Converter Information:** Model, Serial number (59944), Software version (3.90.00), Software date (Mar 16 2012 16:32:33).
- Folder path:** C:\Documents and Settings\ [Select button]

SELECT TO CHOOSE A DIFFERENT FILE PATH

TEST REPORT (EXAMPLE)

ISOCHECK Verification System Report		
Filename: 45972_04_06_2012_18.18.50.pdf		

<p style="text-align: center;">CUSTOMER INFORMATION</p> <p>Customer Name: Operator Name: Code: Site Details Location: Test date: 04/06/2012 18.18.50</p>	<p style="text-align: center;">METER INFORMATION</p> <p>Converter Circ. board ID: 45972 Model: Software ver: 3.90.00 Software date: Jan 11 2012 14:36:54</p>
---	---

<p>ISOCHECK INFORMATION</p> <p>Serial Num: 56P0002 Last calibr date: 02/2012 Next calibr date: 03/2013 Isocheck Interface software ver: 1.0.0.0 / 6 apr 2012, 18.17</p>
--

Total test result: PASS

FLOW RATE TEST RESULTS				
N°.Test	Flow rate test Value (0-100)	Flow rate measured (0-100)	Flow rate error	Flow rate test result
1	0	0,00	0,00	PASS
2	10	9,99	-0,01	PASS
3	20	19,97	-0,03	PASS
4	30	29,94	-0,06	PASS
5	40	39,97	-0,03	PASS
6	50	49,99	-0,02	PASS
7	75	74,96	-0,04	PASS
8	100	99,88	-0,12	PASS

4/20mA CURRENT TEST RESULTS		
N°.Test	Current 4..20mA	4..20mA test result
1	4,000	PASS
2	5,600	PASS
3	7,200	PASS
4	8,800	PASS
5	10,400	PASS
6	12,000	PASS
7	14,000	PASS
8	20,000	PASS

OUTPUT TEST RESULTS		
N°. Test	Output	Output test result
1	OUT1	PASS
2	OUT2	PASS

TOTALIZERS			
Totaliser	U.M.	Before	After
Total Positive	1	.018	.018
Partial Positive	1	.140	.140
Total Negative	1	1009,492	1009,492
Partial Negative	1	.270	.270

Date/Time	Operator signature	Print name

1

2

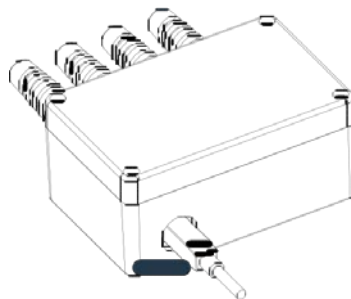
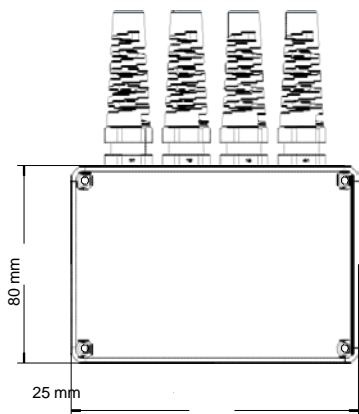
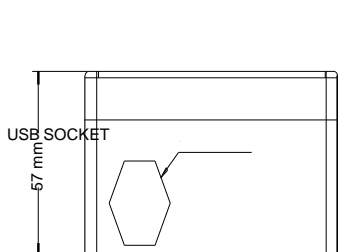
3

4

5

- | | |
|--|---|
| <p>1. TOTAL TEST RESULT:</p> <ul style="list-style-type: none"> • PASS: complete test passed • FAIL: all or some of the test NOT passed • ABORTED: test stopped | <p>2. FLOW RATE TEST REPORT</p> <p>3. 4-20 OUTPUT TEST REPORT</p> <p>4. ON / OFF OUTPUT TEST REPORT</p> <p>5. TOTALIZER READING (before test and after restore user data)</p> |
|--|---|

OVERALL DIMENSIONS



Isoil Industria spa

Head office

20092 Cinisello Balsamo (MI) I

27, via F.lli Gracchi

Phone +39-02-66027.1

Fax +39-02-6123202

E-mail: sales@isoil.it

Web: www.isoil.com

ISOIL 
INDUSTRIA
The solutions that count